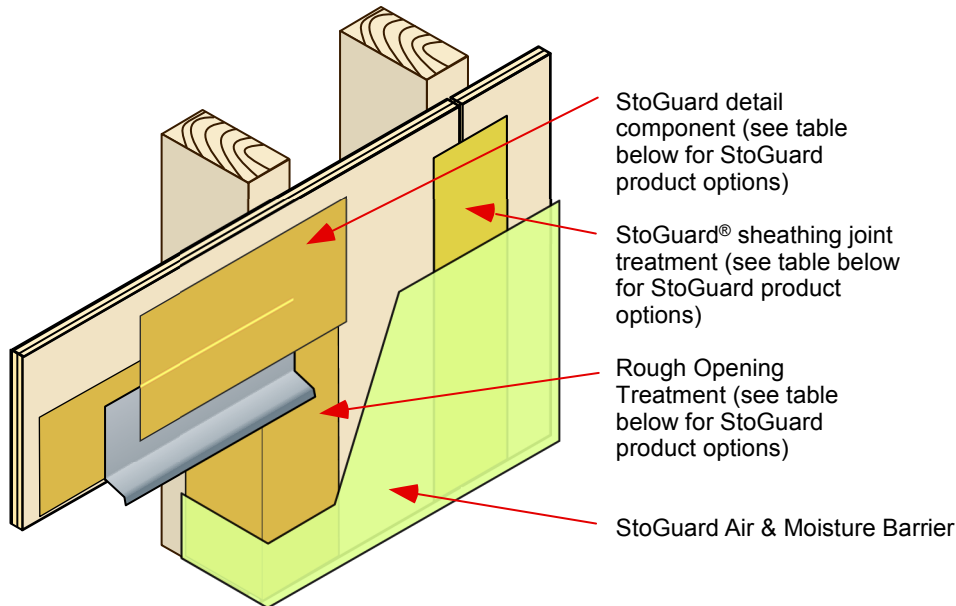


# StoPowerwall® StoGuard® Products

Detail No.: 5.09

Date: December 2015



## StoGuard Air & Moisture Barrier Coatings

Sto Gold Coat	Vapour Permeable
Sto EmeraldCoat	High Perm
Sto VapourSeal-R	Vapour Impermeable
Sto AirSeal	High Perm (not for use with StoGuard Fabric)

StoGuard Detailing Products	Sheathing Joint	Rough Opening	Detail Component
StoGuard RapidFill	✓		✓
StoGuard RapidSeal	✓*	✓	✓*
StoGuard Fabric embedded in StoGuard Air & Moisture Barrier Coating	✓	✓	✓
StoGuard Transition Membrane embedded in StoGuard RapidFill, StoGuard RapidSeal or Sto Emerald Coat			✓
Sto Gold Fill with StoGuard Mesh or Sto Detail Mesh	✓	✓	✓
StoGuard Tape		✓	

\* StoGuard RapidSeal requires StoGuard Mesh or Sto Detail Mesh embedded when used as sheathing joint or detail component treatment.

Property of Sto Corp. All Rights Reserved.

## Notes:

- 1] Refer to Sto detail series 20.xx or 21.xx for complete instructions regarding material options and application instructions for StoGuard products.
- 2] Flashing must be installed at the head and sill of window openings and integrated into the StoGuard system with StoGuard detail components.
- 3] The upper edge of StoGuard Tape must be lapped with a StoGuard detail component to direct water away from the substrate.
- 4] Refer to StoGuard Transition Membrane installation guide for step-by-step instructions for detailing with StoGuard Transition Membrane.
- 5] Refer to the individual Sto product bulletin and applicable Sto specification for the products being used.
- 6] Refer to the most current Sto product bulletins, specifications, installation guides and other information are available at [www.stocorp.com](http://www.stocorp.com).

IMPORTANT: Components not identified as Sto are furnished by other manufacturers and are not necessarily installed by trades who install the Sto products. Refer to project specific contract documents.

## Attention

Sto products are intended for use by qualified professional contractors, not consumers, as a component of a larger construction assembly as specified by a qualified design professional, general contractor or builder. They should be installed in accordance with those specifications and Sto's instructions. Sto Corp. disclaims all, and assumes no, liability for on-site inspections, for its products applied improperly, or by unqualified persons or entities, or as part of an improperly designed or constructed building, for the nonperformance of adjacent building components or assemblies, or for other construction activities beyond Sto's control. Improper use of Sto products or use as part of an improperly designed or constructed larger assembly or building may result in serious damage to Sto products, and to the structure of the building or its components. **STO CORP. DISCLAIMS ALL WARRANTIES EXPRESS OR IMPLIED EXCEPT FOR EXPLICIT LIMITED WRITTEN WARRANTIES ISSUED TO AND ACCEPTED BY BUILDING OWNERS IN ACCORDANCE WITH STO'S WARRANTY PROGRAMS WHICH ARE SUBJECT TO CHANGE FROM TIME TO TIME.** For the fullest, most current information on proper application, clean-up, mixing and other specifications and warranties, cautions and disclaimers, please refer to the Sto Corp. website, [www.stocorp.com](http://www.stocorp.com).

[www.stocorp.com](http://www.stocorp.com)